

Orchestra Was



Forever's A Long, Long Time





Produced and Arranged by

DON WAS

Recorded and

Mixed by

RIK PEKKONEN

© & © 1997
PolyGram
Records, Inc.
Manufactured
and
marketed
by

Verve
Records,
a division
of PolyGram
Classics
and
Jazz,
a division
of PolyGram
Records, Inc., 825
Eighth Ave.,
New York, NY.

All rights
reserved.
Unauthorized
reproduction,
copying,
hiring,

lending,
public
performance,
and
broadcast
prohibited.
Printed
in
USA.



8145399152

ORQUESTRA WAS

FOREVER'S A LONG, LONG TIME

VERVE FORECAST

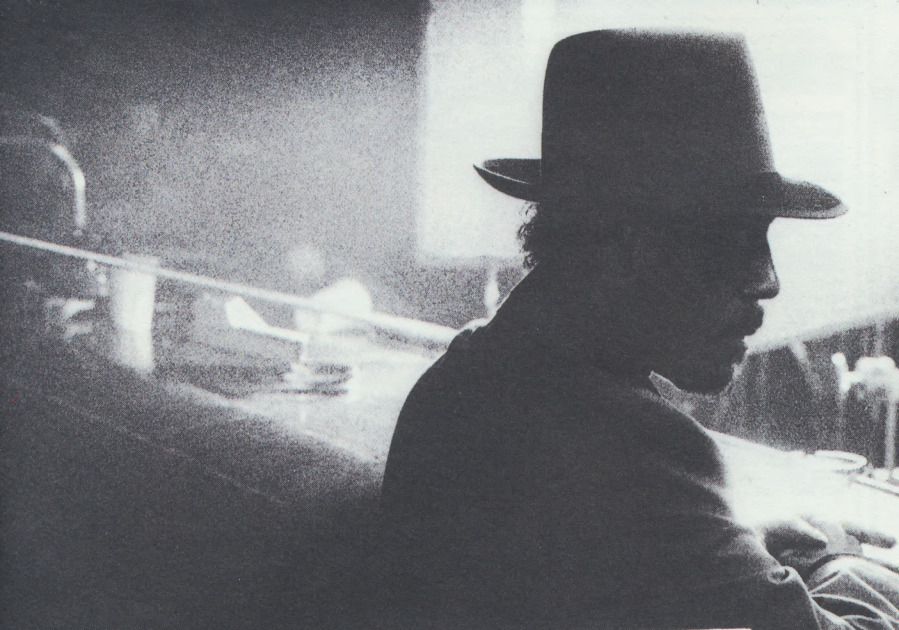
VERVE FORECAST

314 533 915-2

ORQUESTRA WAS

FOREVER'S A LONG, LONG TIME

3145339152



ORQUESTRA WAS "FOREVER'S A LONG, LONG TIME"

**FEATURING PERFORMANCES BY: SWEET PEA ATKINSON • TERENCE BLANCHARD • SHEILA E. • MERLE HAGGARD
HERBIE HANCOCK • WAYNE KRAMER • HARVEY MASON • DON WAS AND MANY OTHERS**

DISC INCLUDES ENHANCED-CD VERSION OF AWARD-WINNING FILM: "Forever's a long, long time"

Presented by FRANCIS FORD COPPOLA • Directed by DON WAS • Starring KRIS KRISTOFFERSON and SWEET PEA ATKINSON



PERSONNEL

"FOREVER'S A LONG, LONG TIME", "I AIN'T GOT NOTHIN' BUT TIME" AND "LOST ON THE RIVER":

SWEET PEA ATKINSON - lead vocals
SIR HARRY BOWENS and DONALD RAY MITCHELL - background vocals
HERBIE HANCOCK - piano and Fender Rhodes
TERENCE BLANCHARD - trumpet and flugelhorn
DAVID McMURRAY - saxophone and flute
HARVEY MASON - drums
SHEILA E. - percussion
LENNY CASTRO - percussion
MICHAEL FISCHER - percussion
CURT BISQUERA - percussion
MICHITO SANCHEZ - percussion
RANDY JACOBS - electric and acoustic guitar
ROBBY TURNER - pedal and lap steel
LILI HAYDN - violin
LUIS RESTO - electronic keyboards
JAMIE MUHOBERAC - electronic keyboards
DON WAS - acoustic bass and keyboards
JEFF PESCIETTO - vocal arrangements

**"EXCUSE ME, COLONEL. COULD I BORROW YOUR NEWSPAPER?"
AND "YOU'VE BEEN HAVING A ROUGH NIGHT, HUH?":**

WAYNE KRAMER - guitar
DAVID McMURRAY - sax and flute
HARVEY MASON - drums
JAMIE MUHOBERAC - keyboards
DON WAS - acoustic bass, danelectro 6-string guitar, loop programming

"NEVER AGAIN (WILL I KNOCK ON YOUR DOOR)?"

PORTIA GRIFFIN - lead vocal
SWEET PEA, HARRY AND DONALD - backing vocals
DON WAS - keyboards, guitar
DAVID McMURRAY - sax and flute
ANTHONY WAS - drums

"ONCE UPON A TIME IN DETROIT"

HERBIE HANCOCK - piano
LILI HAYDN - violin
JAMIE MUHOBERAC - synthesizer
SHEILA E - african talking drum

"DETROIT IN A TIME UPON ONCE":

HERBIE HANCOCK - piano
DON WAS - synthesizer
JAMIE MUHOBERAC - synthesizer

"A BIG POEM ABOUT HELL"

JAMIE MUHOBERAC - keys
DON WAS - saxophone

"I'M SO TIRED OF IT ALL":

MERLE HAGGARD - lead vocal & guitar
JOE MANUEL - lead guitar
ABE MANUEL JR. - fiddle and ac. guitars
BIF ADAM - drums
NORM HAMLET - pedal steel
ED CURTIS - bass
DON WAS - acoustic guitar

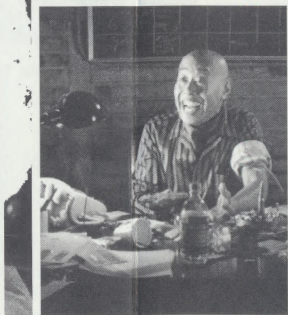


My deep gratitude to Francis Coppola, Anne Marie McKay, Larry Shapiro, Fred Fuchs and Palomar Pictures; Kris Kristofferson, Herbie, Merle and all the incredible musicians who so generously performed on this disc; Chris Roberts, Chuck Mitchell, David Bates, Teresa Medina, Gemma Corfield and Sweet Pea Atkinson (a star is born).

"Forever's A Long, Long Time" (1951,1979), "I Ain't Got Nothin' But Time" (1954,1982), "Never Again (Will I Knock On Your Door)" (1948,1975)", "Lost On The River" (1949,1976), written by Hank Williams. Published by Acuff-Rose Music Inc. and Hiram Music.

"I'm So Tired of It All" written by Hank Williams and Hank Williams, Jr. Published by Acuff-Rose Music, Inc. 1970.

"Once Upon a Time In Detroit", "Excuse Me, Colonel. Could I Borrow Your Newspaper?", "You've Been Having a Rough Night, Huh?", "A Big Poem About Hell" and "Detroit in a Time Upon Once" written by Don Was. Published by 1-800-Don Was Music/EMI Music. 1996



Sweet Pea Atkinson and Randy Jacobs appear courtesy of Pointblank/Virgin Records America, Inc.
Merle Haggard appears courtesy of Curb Records
David McMurray appears courtesy of Warner Bros. Records Inc.
Wayne Kramer appears courtesy of Epitaph Records
Harvey Mason appears courtesy of Atlantic Recording Corporation
Lill Haydn appears courtesy of Atlantic Recording Corporation
Herbie Hancock is a Verve recording artist

To be on our mailing list, please write
Verve Forecast 825 Eighth Ave. New York, N
1001

Visit us at: WWW.VERVEINTERAC

Photographs: Caroline Grayshock

Art Direction & Design: David Lau

Release Coordination: Nate Herr



ANTILLES

This compact disc be played in a regular CD player and also in most multimedia computers. The data portion of this CD is free and is provided with no guarantees or warranties of any kind. Verve Records or Nichols & Mac shall not be liable for any direct, indirect, or consequential damages arising out of the use or inability to use this product.

System Requirements

Macintosh or Power Macintosh

- Mac OS 7.x or higher
- 68040 or Power PC processor
- 8 MB of RAM
- 640 X 480 resolution at 16 bit (thousands of colors); will run in 256 colors
- double-speed CD-ROM drive
- 1 MB of hard drive space available

Windows 3.x or Windows 95

- 486 processor or higher at 66 Mhz or higher
- 8 MB of RAM
- 640 X 480 resolution at 16 bit (thousands of colors); will run in 256 colors
- double-speed CD-ROM drive
- 16 bit Windows® compatible audio
- 1MB of hard drive space available

Installation Instructions for Computer use

Open the README file for detailed instruction and additional information.

Macintosh or Power Macintosh

1. Insert CD into CD-ROM drive.
2. Double click on Installer; follow instructions.
3. After installation, double click on **Forever**

Windows 3.x

1. Insert CD into CD-ROM drive.
2. In Program Manager, choose RUN from the file menu.
3. Type: (your CD-ROM drive letter):\install.exe
Example: D:\install.exe
4. Follow the instructions on screen.

Windows 95

1. Insert CD into CD-ROM drive.
2. Click on Start button; select Run.
3. Type: (your CD-ROM drive letter):\install.exe
Example: D:\install.exe
4. Follow the instructions on screen.



NICHOLS & MAC



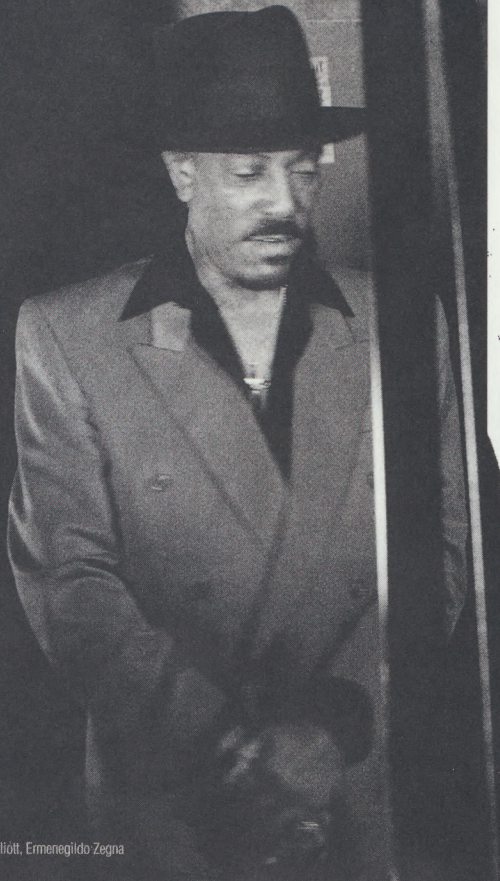
Quicktime and the Quicktime logo are trademarks used under license.



Director © Copyright ©1994
Macromedia, Inc.

D o n Was





Orchestra Was

Forever's A Long, Long Time

sweet pea
cruises thru slushy
3am detroit streets
hat lit by troubled dashboards
just like hank williams
boot thru the floorboard
of a '52 cadillac
wonderin' how many lies
one man can get away with

sweet pea atkinson
obliterates montgomery's favorite son
into a thousand veg-o-matic shreds
only to miraculously
reconstruct him
twenty years later
in a jefferson ave. opium den
around the corner
from the closed chrysler plant

was he thinkin'
about hank's troubled life
when he u-turned his lincoln
in front of a bus stop
and headed back
to rochelle's crib
for one
last, desperate stab
at salvation?

well friend,
truth
floats like a bus
from the inferno
thru cloud-drenched
motor city underpasses

PRODUCED AND ARRANGED BY DON WAS

Recorded and Mixed by **Rik Pekkonen**
Additional engineering by **Dan Bosworth**
Assisted by **Rail Rogut & Jeff De Morriss**
"I'm So Tired Of It All" recorded by **Lou Bradley**
at Merle's Ranch
Recorded at Oceanway & The Chomsky Ranch
Mixed at Record One except for tracks 3, 4, 7, & 9
which were mixed
(with too much compression and over Rik's futile objections)
by **Don Was** at Chomsky
Mastered by **Steve Marcussen** at Precision Mastering
Digital Editing by **Ron Boustead**
Production Co-ordinators: **Carrie McKonkey** and **Pat Dorn**
for The Marsha Burns Co.
Executive Music Producer: **David Bates**
Management: **David Passick Entertainment**
Action: **Jack Leitenberg**
Chief of Staff: **Jane Oppenheimer**
Arrangement Transcriptions: **Beth Ertz**
Thanks to Peavey, Shure Bros., Paiste, Baldwin Pianos, Trace Elliott, Ermenegildo Zegna

© 1997 PolyGram Records, Inc.
All rights reserved. Printed in USA 914 533 915 2



one Once upon a time in Detroit 1:55
 two I ain't got nothin' but time 8:27
 three Never again (will I knock on your door) 3:52
 four Excuse me, colonel, could I borrow your newspaper? 4:56
 five Detroit in a time upon once :58
 six Forever's a long, long time 6:50
 seven You've been having a rough night, huh 4:49
 eight Lost on the river 13:04
 nine A big poem about hell 2:48
 ten I'm so tired of it all 3:38

file under: pop/rock



Produced and Arranged by

DON WASRecorded and
Mixed by**RIK PEKKONEN**

© & © 1997
 PolyGram
 Records, Inc.
 Manufactured
 and
 marketed
 by

Verve
 Records,
 a division
 of PolyGram
 Classics
 and
 Jazz,
 a division
 of PolyGram
 Records, Inc., 825
 Eighth Ave.,
 New York, NY.
 All rights
 reserved.
 Unauthorized
 reproduction,
 copying,
 hiring,

lending,
 public
 performance,
 and
 broadcast
 prohibited.
 Printed
 in
 USA.

0001

D o n Was



© & ©
1997

PolyGram Records, Inc.
Manufactured
and
marketed

by
Verve Records,
a division of PolyGram
Classics and Jazz,
a division of PolyGram Records, Inc.,
825 Eighth Ave.,
New York

NY
10019

All rights reserved.
Unauthorized reproduction,
firing,
lending,
public
performance,
and
broadcast
prohibited.
Made in USA

314 533 915-2

Produced and Arranged by
DON WAS

Orchestra Was

Forever's A Long, Long Time

VERVE
CLASSICS